

# SENIOR SCHOOL SUBJECT SELECTIONS (YEARS 11 & 12)

SOUTH AUSTRALIAN CERTIFICATE OF EDUCATION (SACE)		
	STAGE 1 - YEAR 11	STAGE 2 - YEAR 12
THE ARTS	Visual Arts – Art Visual Arts – Design Creative Arts – Media Dance Drama Music	Visual Arts – Art Visual Arts – Design Music
DESIGN & TECHNOLOGY	Food & Hospitality Material Solutions – Timber Focus Material Solutions – Metal Focus Engineering Trades Training (VET)	Food & Hospitality Material Solutions
ENGLISH	English Essential English	English Essential English English Literary Studies (at OAC)
HEALTH & PE	Physical Education Health & Wellbeing Child Studies SAASTA	Physical Education SAASTA
HUMANITIES	Aboriginal Studies Modern History Legal Studies Society & Culture Gender Studies Ancient Studies	Aboriginal Studies Modern History Legal Studies Society & Culture Women's Studies
LANGUAGE	Indonesian	Indonesian
MATHEMATICS	Essential Mathematics General Mathematics Mathematical Methods Specialist Mathematics (at OAC)	General Mathematics Mathematical Methods Specialist Mathematics (at WHS)
SCIENCE	Biology Chemistry Naval Engineering Physics Forensic Science	Biology Chemistry Naval Engineering Physics
PERSONAL LEARNING	Personal Learning Plan (PLP) (Year 10)	Workplace Practices Research Project (Stage 1)

Please visit: [lefevrehs.sa.edu.au/courseinformation](http://lefevrehs.sa.edu.au/courseinformation) to find further information about the IBMP and subject details.

The published course information was correct at the time of production and represents the courses intended to be offered by the school, however please note that course offerings are subject to amendment and change.



**LE FEVRE**  
HIGH SCHOOL

## Le Fevre High School

90 Hart Street, Semaphore South

South Australia 5019

Phone: +61 8 8449 7004

Fax: +61 8 8449 1220

Email: [dl.0814\\_info@schools.sa.edu.au](mailto:dl.0814_info@schools.sa.edu.au)

[www.lefevrehs.sa.edu.au](http://www.lefevrehs.sa.edu.au)



Government of South Australia  
Department for Education



**START A CAREER IN MARITIME TODAY**  
For the Western Adelaide schools, coordinated by Le Fevre High School

# 2022 COURSE INFORMATION OVERVIEW

For more information please visit: [lefevrehs.sa.edu.au/courseinformation](http://lefevrehs.sa.edu.au/courseinformation)

## FROM THE PRINCIPAL

Le Fevre High School is a diverse co-educational secondary school offering a comprehensive curriculum through the International Baccalaureate, Middle Years Program (IBMYP) aligned to the Australian Curriculum and a range of subjects through the South Australian Certificate of Education (SACE) with the inclusion of Vocational Education and Training (VET) courses. The school has a deliberate focus on internationalism and a well-established Indonesian language program. Le Fevre High School is the Maritime High School offering students opportunities to explore pathways into careers and jobs within and connected to the Maritime Industry. The school has and continues to be involved in both the Advanced Technology Program and the Defence Industry Pathways Program, providing a number of locally relevant STEM learning opportunities for students. The school is committed to the inclusion of ATSI perspectives in all teaching and learning plans and has a history of offering a highly successful South Australian Aboriginal Sports and Training Academy (SAASTA) onsite.

### Our school vision and purpose is:

*Le Fevre High School is an innovative, dynamic learning community, committed to providing effective quality teaching and learning that emphasises the achievement of personal bests, excellence, well-being and respect for all.*

*To provide a quality, holistic education in a contemporary and caring environment in which students are challenged to develop their knowledge, skills and values, empowering them to be successful, active citizens in the local and global society.*

We live our vision and purpose through a school culture built on our values of Care, Commitment, Cooperation and Respect and in the provision of a diverse range of learning opportunities that value the development of our graduate qualities where students strive to be inquirers, communicators, caring, open minded, principled, knowledgeable, thinkers, balanced and reflective. We prepare our students for career and job pathways including further study, training and/or employment. For some students the training begins while at school in the form of School Based Apprenticeships.

The range of courses allows students to choose from different study and career pathways. Career counselling begins in year 8 and continues until our

students successfully enter further education, training or employment. In this way, we support students to be successful.

The Course Information online and this Course Information Brochure outlines all the courses and subjects that we can offer at Le Fevre High School in 2022. The decisions made now play an important role in both the learning pathways and career pathways for young people.

I encourage all parents/caregivers to contact the school for any assistance with subject and/or course choices.

**Kirri Minnican**  
Principal

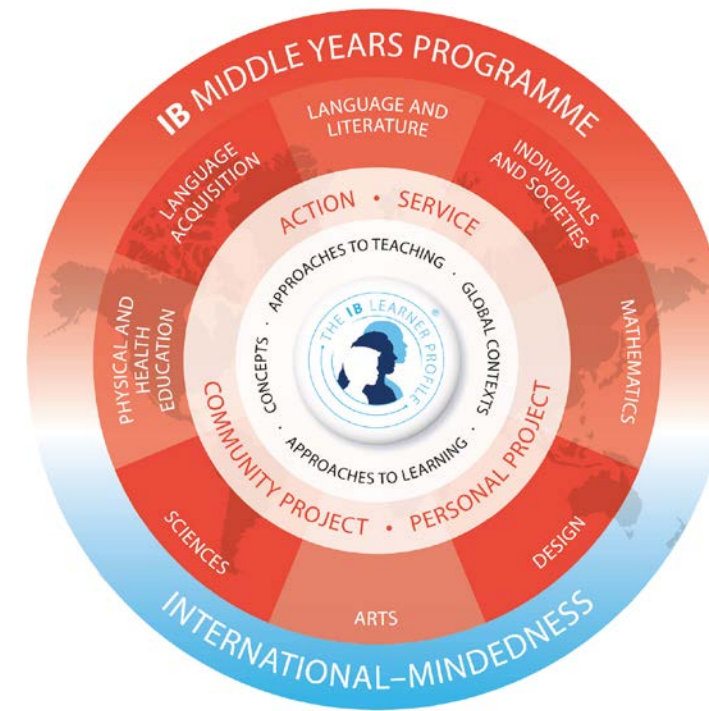
Teachers and leaders will work together with students and families to guide you in making decisions. Learning Area Coordinators and Year Level Coordinators will provide details during subject information sessions held in term 3. They can also provide further detailed advice and guidance during the Course Counselling process.

## SUBJECT SELECTION FOR 2022

We trust that this overview is a helpful start towards an informed Course Counselling process. Please take the time to read the information available on our website at [lefevrehs.sa.edu.au/courseinformation](http://lefevrehs.sa.edu.au/courseinformation). Follow the links under Curriculum to read about the IB Middle Years Programme or SACE to understand the frameworks within which our students will study the curriculum. Head further to our Course Information pages which provide detailed information for each subject offered. These subject descriptors form the first step towards conversations about personal strengths and interests that will inform subject choices, leading to future employment options.

## WHAT IS THE IB MIDDLE YEARS PROGRAMME?

- The MYP provides a framework of learning to deliver the Australian Curriculum, which encourages students to become creative, critical and reflective thinkers.
- The MYP emphasises intellectual challenge, encouraging students to make connections between their studies in traditional subjects and to the real world.
- It fosters the development of skills for communication, intercultural understanding and global engagement, qualities that are essential for life in the 21st century.



## IB LEARNER PROFILE

IB learners strive to become inquirers, knowledgeable, thinkers, communicators, principled, open-minded, caring, risk-takers, balanced, and reflective.

These attributes represent a broad range of human capacities and responsibilities that go beyond intellectual development and academic success.



## SACE COURSE REQUIREMENTS

Students will choose courses in accordance with SACE requirements, ensuring a minimum total of 200 SACE Credits, as outlined in the table.

Australian Tertiary Admissions Ranking (ATAR). For students requiring an ATAR, please see the SACE page on our website for further information: [lefevrehs.sa.edu.au/courseinformation/senior-school-sace-year11-12/](http://lefevrehs.sa.edu.au/courseinformation/senior-school-sace-year11-12/)

REQUIREMENTS		
<b>Year 10</b> Personal Learning Plan (Stage 1 compulsory subject and courses)		10
<b>Year 11 (Stage 1) or year 12 (Stage 2)</b> Literacy - from a range of English subjects and courses (Compulsory) Numeracy - from a range of mathematics subjects and courses (Compulsory)		20
<b>Year 12 (Stage 2)</b> Research Project - completed at Stage 1 (Compulsory) Other Stage 2 subjects and courses* (Compulsory)		10
		60
<b>Year 11 (Stage 1) or year 12 (Stage 2)</b> Other Stage 2 subjects or courses of the students choice		90
<b>Total</b>		200

\* Many students will complete subjects or courses worth more than 70 credits at Stage 2

## IB MIDDLE YEARS PROGRAMME - SUBJECT SELECTION

In years 7, 8, 9 and 10 the curriculum offered is delivered through IBMYP required learning, with the content drawn from the Australian Curriculum, in the eight areas of learning.

Students study a total of 14 units, where a unit of study is a semester of approximately four hours per week of class lessons. As students progress through the school more choice is possible to allow students the opportunity to concentrate on areas of particular interest or ability.

The table below shows the full curriculum package from which our Middle School students develop their course. The semesters as shown below are not necessarily where these subjects will be timetabled.

YEAR 7 (MYP 2)		YEAR 8 (MYP 3)		YEAR 9 (MYP 4)		YEAR 10 (MYP 5)	
English	→	English	→	English	→	English	
Mathematics	→	Mathematics	→	Mathematics	→	Mathematics	
Science	→	Science	→	Science	→	Science	
Individuals & Societies	→	Individuals & Societies	→	Individuals & Societies	→	Individuals & Societies	Health & PE
Indonesian	→	Indonesian	→	Indonesian	→	PLP & Personal Project	Elective
Health & PE or Soccer	→	Health & PE or Soccer	→	Health & PE or Soccer	→	Elective Design	Elective
Design: Home Ec	→	Design: Home Ec	→	Design: Home Ec	→	Elective	Elective
Design: Digital Tech	→	Design: Digital Tech	→	Design: Digital Tech	→	Elective	Elective
Design: Materials Solutions	→	Design: Materials Solutions	→	Design: Materials Solutions	→	Elective Arts	Elective
The Arts	→	The Arts	→	The Arts	→	Elective Arts or Design or Health & PE: Sports Focus	Elective
Music	→	Music	→	Music	→	Elective	Elective
Visual	→	Visual	→	Visual	→	Elective	Elective
Performing	→	Performing	→	Performing	→	Elective	Elective

YEAR 9 (MYP 4)				YEAR 10 (MYP 5)				
Students choose 1 elective from each of the Arts and Design with an additional third choice.				Students choose from any elective units below to build their year 10 course.				
THE ARTS	DESIGN			THE ARTS	DESIGN	HEALTH & PE	I & S	LANGUAGE
Art	Digital Technology			Visual Art	Digital Technology	Physical Education – Sports Focus	Justice, Power and Society	Indonesian (1 or 2 units)
Media Arts & Design	Home Economics			Media Art	Home Ec – Multicultural Food	Active 8	EDGE – Environmental Exploration	
Dance	Material Solutions			Visual Art – Design	Material Solutions – Timber	Soccer		
Drama	Engineering & Construction Solutions			Dance	Material Solutions – Metal			
Music	Enterprise Education			Drama				
				Music				

Please visit: [lefevrehs.sa.edu.au/courseinformation](http://lefevrehs.sa.edu.au/courseinformation) to find further information about the IBMYP and subject details.

The published course information was correct at the time of production and represents the courses intended to be offered by the school, however please note that course offerings are subject to amendment and change.