



**LE FEVRE**  
HIGH SCHOOL

# **COURSE** INFORMATION OVERVIEW

For more information please visit: [lefevrehs.sa.edu.au/courseinformation](http://lefevrehs.sa.edu.au/courseinformation)

## FROM THE PRINCIPAL

Le Fevre High School is a diverse co-educational secondary school offering a comprehensive curriculum through the International Baccalaureate, Middle Years Program (IBMYP) aligned to the Australian Curriculum and a range of subjects through the South Australian Certificate of Education (SACE) with the inclusion of Vocational Education and Training (VET) courses. The school has a deliberate focus on internationalism and a well-established Indonesian language program. Le Fevre High School is the Maritime High School offering students opportunities to explore pathways into careers and jobs within and connected to the Maritime Industry. The school has and continues to be involved in both the Advanced Technology Program and the Defence Industry Pathways Program, providing a number of locally relevant STEM learning opportunities for students. The school is committed to the inclusion of ATSI perspectives in all teaching and learning plans and has a history of offering a highly successful South Australian Aboriginal Secondary Training Academy (SAASTA) onsite.

### *Our school vision is:*

*To empower young people to be knowledgeable global citizens who think critically, enact positive change and meet the challenges of a changing world.*

We live our vision and purpose through a school culture built on our values of Care, Commitment, Cooperation and Respect and in the provision of a diverse range of learning opportunities that value the development of our graduate qualities where students strive to be inquirers, communicators, caring, open minded, principled, knowledgeable, thinkers, balanced and reflective. We prepare our students for career and job pathways including further study, training and/or employment. For some students the training begins while at school in the form of School Based Apprenticeships.

The range of courses allows students to choose from different study and career pathways. Career counselling begins in year 8 and continues until our students successfully enter further education, training or employment. In this way, we support students to be successful.

The Course Information online and this Course Information Brochure outlines all the courses and subjects that we can offer at Le Fevre High School. The decisions made now play an important role in both the learning pathways and career pathways for young people.

I encourage all parents/caregivers to contact the school for any assistance with subject and/or course choices.

**Kirri Minnican**  
**Principal**

## SUBJECT SELECTION

We trust that this overview is a helpful start towards an informed Course Counselling process.

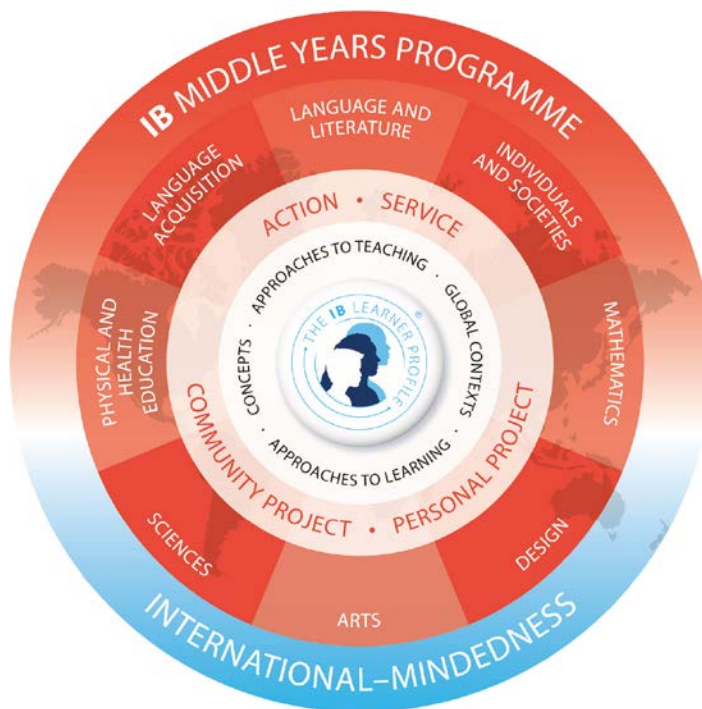
Please take the time to read the information available on our website at [lefevrehs.sa.edu.au/courseinformation](http://lefevrehs.sa.edu.au/courseinformation). Follow the links under Curriculum to read about the IB Middle Years Programme or SACE to understand the frameworks within which our students will study the curriculum. Head further to our Course Information pages which provide detailed information for each subject offered. These subject descriptors form the first step towards conversations about personal strengths

and interests that will inform subject choices, leading to future employment options.

Teachers and leaders will work together with students and families to guide you in making decisions. Learning Area Coordinators and Year Level Coordinators will provide details during subject information sessions held in term 3. They can also provide further detailed advice and guidance during the Course Counselling process.

# WHAT IS THE IB MIDDLE YEARS PROGRAMME?

- The MYP provides a framework of learning to deliver the Australian Curriculum, which encourages students to become creative, critical and reflective thinkers.
- The MYP emphasises intellectual challenge, encouraging students to make connections between their studies in traditional subjects and to the real world.
- It fosters the development of skills for communication, intercultural understanding and global engagement, qualities that are essential for life in the 21st century.



## IB LEARNER PROFILE

IB learners strive to become inquirers, knowledgeable, thinkers, communicators, principled, open-minded, caring, risk-takers, balanced, and reflective.

These attributes represent a broad range of human capacities and responsibilities that go beyond intellectual development and academic success.



## SACE COURSE REQUIREMENTS

Students will choose courses in accordance with SACE requirements, ensuring a minimum total of 200 SACE Credits, as outlined in the table.

Australian Tertiary Admissions Ranking (ATAR). For students requiring an ATAR, please see the SACE page on our website for further information: [lefevrehs.sa.edu.au/courseinformation/senior-school-sace-yr11-12/](http://lefevrehs.sa.edu.au/courseinformation/senior-school-sace-yr11-12/)

REQUIREMENTS	
<b>Year 10</b> Personal Learning Plan (Stage 1 compulsory subject and courses)	10
<b>Year 11 (Stage 1) or year 12 (Stage 2)</b> <b>Literacy</b> - from a range of English subjects and courses (Compulsory) <b>Numeracy</b> - from a range of mathematics subjects and courses (Compulsory)	20 10
<b>Year 12 (Stage 2)</b> <b>Research Project</b> - completed at Stage 1 (Compulsory) <b>Other Stage 2 subjects and courses*</b> (Compulsory)	10 60
<b>Year 11 (Stage 1) or year 12 (Stage 2)</b> <b>Other Stage 2 subjects or courses of the students choice</b>	90
<b>Total</b>	<b>200</b>

\* Many students will complete subjects or courses worth more than 70 credits at Stage 2

# IB MIDDLE YEARS PROGRAMME - SUBJECT SELECTION

In years 7, 8, 9 and 10 the curriculum offered is delivered through IBMYP required learning, with the content drawn from the Australian Curriculum, in the eight areas of learning.

Students study a total of 14 units, where a unit of study is a semester of approximately four hours per week of class lessons. As students progress through the school more choice is possible to allow students the opportunity to concentrate on areas of particular interest or ability.

The table below shows the full curriculum package from which our Middle School students develop their course. The semesters as shown below are not necessarily where these subjects will be timetabled.

YEAR 7 (MYP 2)				YEAR 8 (MYP 3)			YEAR 9 (MYP 4) + COMMUNITY PROJECT		YEAR 10 TRANSITION TO SACE		YEAR 10 (MYP 5 OPTIONAL PATHWAY)		
English				English			English		English		English		
Mathematics				Mathematics			Mathematics		Mathematics		Mathematics		
Science				Science			Science		Science		Science		
Individuals & Societies				Individuals & Societies			Individuals & Societies		Individuals & Societies	Healthy Lifestyles (inc Female only option) or Soccer	Individuals & Societies		
Indonesian				Indonesian			Indonesian		PLP	Elective	Indonesian		
Healthy Lifestyles or Soccer	Design: Home Ec	Design: Digital Tech		Healthy Lifestyles or Soccer	Elective Design		Healthy Lifestyles (inc Female only option) or Soccer	Elective Design	Elective	Elective	PLP (+ Personal Project)	Healthy Lifestyles (inc Female only option)	
Design & Tech	The Arts Music    Visual    Performing			Elective Arts	Elective Arts or Design or choose a H& PE option		Elective Arts	Elective Arts or Design or choose a H& PE option	Elective	Elective	Elective	Elective	
↓				↓				↓				↓	
YEAR 8 (MYP 3)		YEAR 9 (MYP 4) + COMMUNITY PROJECT			YEAR 10 TRANSITION TO SACE				YEAR 10 (MYP 5 OPTIONAL PATHWAY)				
Students choose 1 elective from each of the Arts and Design with an additional third choice.		Students choose 1 elective from each of the Arts and Design with an additional third choice.			Students choose from any elective units below to build their Year 10 course.				Students must choose two elective units from same subject group to the left to build their Year 10 course.				
THE ARTS	DESIGN	THE ARTS	DESIGN	HEALTH & PE	THE ARTS	DESIGN	HEALTH & PE	INDIVIDUALS & SOCIETIES					
Art	Digital Technology	Art	Digital Technology	Physical Education	Visual Art	Digital Technology A & B	Physical Education	Justice, Power & Society					
Media Arts & Design	Home Economics	Media Arts & Design	Home Economics	Soccer	Visual Art - Design	Home Ec - Multicultural Food A & B	Outdoor Education	EDGE - Environmental Exploration					
Dance	Design & Technology Semester 1	Dance	Design & Technology Timber		Media Art	Design & Technology - Timber	Soccer	LANGUAGES					
Drama	Design & Technology Semester 2	Drama	Design & Technology Metal		Dance	Design & Technology - Metal	VET - Cert I Hospitality	Indonesian A & B					
Music	HEALTH & PE	Music	Enterprise Design		Drama	Enterprise Design		SAASTA					
	Physical Education				Music			Pathways Program					
	Soccer												

Please visit: [lefevrehs.sa.edu.au/courseinformation](http://lefevrehs.sa.edu.au/courseinformation) to find further information about the IBMYP and subject details.

The published course information was correct at the time of production and represents the courses intended to be offered by the school, however please note that course offerings are subject to amendment and change.

# SENIOR SCHOOL SUBJECT SELECTIONS (YEARS 11 & 12)

SOUTH AUSTRALIAN CERTIFICATE OF EDUCATION (SACE)		
	STAGE 1 - YEAR 11	STAGE 2 - YEAR 12
THE ARTS	Visual Arts – Art Visual Arts – Design Creative Arts Dance Drama Music	Visual Arts – Art Visual Arts – Design Creative Arts Drama Music
DESIGN & TECHNOLOGY	Food & Hospitality VET – Cert II Kitchen Operations Design and Technology – Timber Design and Technology – Metal Digital Technology VET – Cert II Engineering Business Innovations	Food & Hospitality Material Solutions
MARITIME	VET – Cert II Maritime Operations Naval Engineering	Naval Engineering
ENGLISH	English Essential English	English Essential English English Literary Studies
HEALTH & PE	Health & Physical Education Health & Wellbeing Child Studies Soccer Outdoor Education	Physical Education Health & Wellbeing Child Studies Outdoor Education (from 2024)
HUMANITIES	Aboriginal Studies Modern History Ancient Studies Legal Studies Society & Culture Women's Studies	Aboriginal Studies Modern History Legal Studies Society & Culture Women's Studies
LANGUAGE	Indonesian	Indonesian
MATHEMATICS	Essential Mathematics General Mathematics Mathematical Methods Specialist Mathematics (at OAC)	General Mathematics Mathematical Methods Specialist Mathematics (at WHS or OAC)
SCIENCE	Biology Forensic Science Chemistry Physics	Biology Chemistry Physics
SAASTA	SAASTA Pathways Programs	SAASTA Pathways Programs
CROSS CURRICULUM	Personal Learning Plan Workplace Practices	Research Project (commenced at Stage 1) Workplace Practices

**Please visit: [lefevrehs.sa.edu.au/courseinformation](https://lefevrehs.sa.edu.au/courseinformation) to find further information about the IBMP and subject details.**

The published course information was correct at the time of production and represents the courses intended to be offered by the school, however please note that course offerings are subject to amendment and change.



Government of South Australia  
Department for Education



**START A CAREER IN MARITIME TODAY**

For the Western Adelaide schools, coordinated by Le Fevre High School