

MIDDLE SCHOOL - SUBJECT SELECTION

In years 7, 8, 9 and 10 the curriculum offered is the Australian Curriculum, in the eight areas of learning.

Students study a total of 14 units, where a unit of study is a semester of approximately four hours per week of class lessons. As students progress through the school more choice is possible to allow students the opportunity to concentrate on areas of particular interest or ability.

The table below shows the full curriculum package from which our Middle School students develop their course. The semesters as shown below are not necessarily where these subjects will be timetabled.

YEAR 7			YEAR 8			YEAR 9			YEAR 10 TRANSITION TO SACE	
English			English			English			English	
Mathematics			Mathematics			Mathematics			Mathematics	
Science			Science			Science			Science	
Humanities & Social Sciences			Humanities & Social Sciences			Humanities & Social Sciences			History	Health & PE (inc Female only option) or Soccer
Indonesian			Indonesian			Indonesian			EIF	Elective
Health & PE or Soccer	Tech: Food & Textiles	Design: Digital Tech	Health & PE or Soccer	Design and Tech	Health & PE (inc Female only option) or Soccer	Elective Design and Tech	Elective	Elective	Elective	
Design & Tech	The Arts		Elective Arts	Choose an Arts, Technologies or Health & PE option	Elective Arts	Choose an Arts, Technologies or Health & PE option	Elective	Elective	Elective	
	Music	Visual	Performing							

YEAR 8		YEAR 9			YEAR 10 TRANSITION TO SACE			
Students choose 1 elective unit from the Arts with an additional choice.		Students choose 1 elective unit from each of the Arts and Design with an additional third choice.			Students choose from any elective units below to build their Year 10 course.			
THE ARTS	DESIGN & TECH	THE ARTS	DESIGN & TECH	HEALTHY LIFESTYLES	THE ARTS	DESIGN & TECH	HEALTHY LIFESTYLES	HUMANITIES
Art	Digital Technology	Art	Digital Technology	Physical Education Pathways	Visual Art A & B	Food Technology A & B	Physical Education Pathways	Justice, Power & Society
Media Arts & Design	Food & Textiles	Media Arts & Design	Food & Textiles	Specialist Football (Soccer)	Visual Art - Design	Design & Technology - Timber	Outdoor Education	EDGE - Environmental Exploration
Dance		Dance	Design & Technology Timber		Media Art	Design & Technology - Metal	Specialist Football (Soccer)	LANGUAGES
Drama	HEALTHY LIFESTYLES	Drama	Design & Technology Metal		Dance	Enterprise Design		Indonesian A & B
Music	Physical Education Pathways	Music	Enterprise Design		Drama	Digital Technology A		SAASTA
	Specialist Football (Soccer)				Music	Digital Technology B		Pathways Program

Note: Subjects with A & B means that students can choose 1 or 2 semesters (units) of this subject.

Please visit: lefevrehs.sa.edu.au/course-information to find further information about the IBMP and subject details.

The published course information was correct at the time of production and represents the courses intended to be offered by the school, however please note that course offerings are subject to amendment and change.



LE FEVRE
HIGH SCHOOL

Le Fevre High School

90 Hart Street, Semaphore South SA 5019

P +61 8 8449 7004

E dl.0814_info@schools.sa.edu.au

lefevrehs.sa.edu.au



Government of South Australia
Department for Education



COURSE INFORMATION OVERVIEW

For more information please visit: lefevrehs.sa.edu.au/courseinformation

FROM THE PRINCIPAL

Le Fevre High School believes in the power of education to transform lives and shape future leaders. Our curriculum is designed to provide a well-rounded education that prepares our students not only for academic success but also for the challenges and responsibilities of the ever-changing world.

Our Course Information Overview serves as a roadmap for your academic journey, outlining the comprehensive range of subjects and programs available to our students. It reflects our commitment to maintaining high standards of academic excellence while nurturing the unique talents and interests of each individual. Academically, our curriculum is designed to inspire critical thinking, creativity and problem-solving skills. It encompasses a wide range of subjects, including Mathematics, Science, Languages, Humanities, Arts and Physical Education. We strongly believe in promoting interdisciplinary learning, enabling our students to make connections across various fields of knowledge and encouraging a well-rounded perspective.

Beyond academics, our curriculum embraces the development of character, resilience and leadership qualities. We place great emphasis on fostering a positive and inclusive school culture where values such

as care, commitment, cooperation and respect are woven into every aspect of school life.

As we embark on this educational journey together, I encourage all students to embrace a growth mindset, to approach challenges with enthusiasm and to make the most of the countless opportunities that will come their way. Parents and guardians, I invite you to actively participate in your child's educational journey, as your involvement and support are vital to their success.

I am confident that, with our dedicated and passionate team of teachers, our well-designed curriculum, and the unwavering support of our school community, we will continue to create an environment where every student can thrive and reach their full potential.

Kirri Minnican
Principal

SUBJECT SELECTION

We trust that this overview is a helpful start towards an informed Course Counselling process.

Please take the time to read the information available on our website at lefevrehs.sa.edu.au/course-information. Follow the links via the View Subjects button to read subject descriptions at each year level. These subject descriptors form the first step towards conversations about personal strengths and interests that will inform subject choices, leading to future employment options.

Teachers and leaders will work together with students and families to guide you in making decisions. Curriculum Leaders and Learning and Engagement Leaders are available to support with any questions and guidance during the Course Counselling process. Information relating to the Course Counselling timeline will be provided separately and on our website.

SACE COURSE REQUIREMENTS

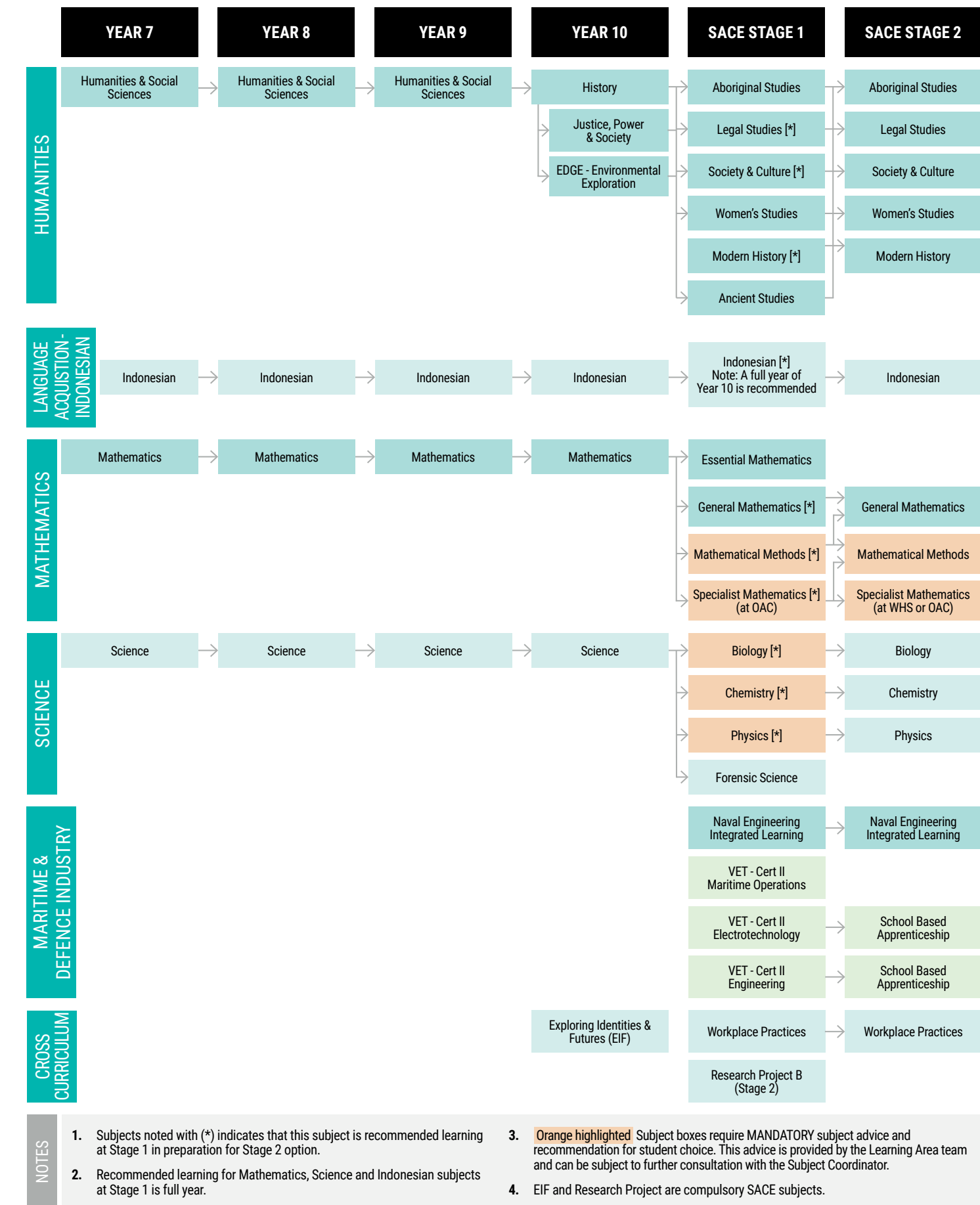
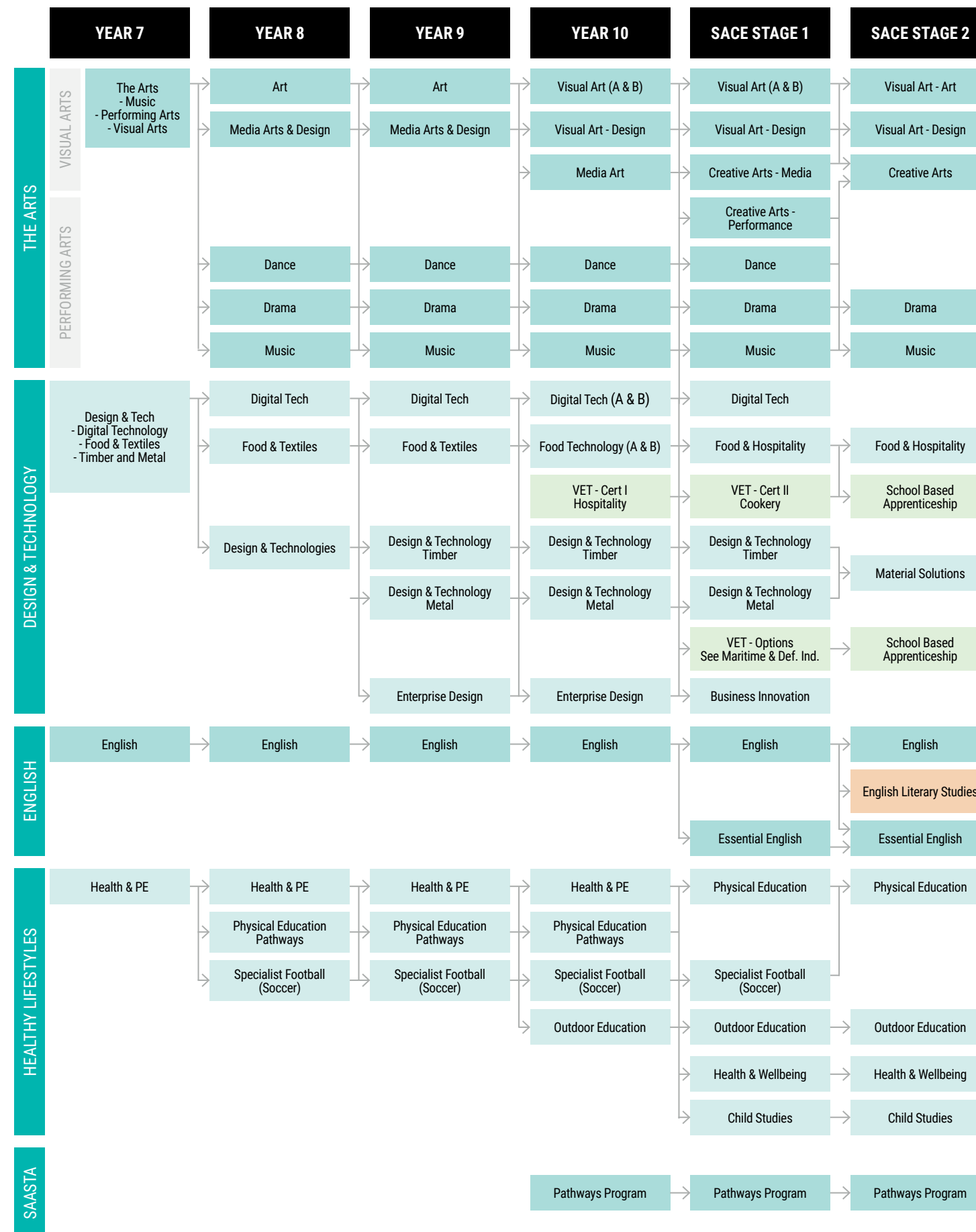
Students will choose courses in accordance with SACE requirements, ensuring a minimum total of 200 SACE Credits, as outlined in the table.

Australian Tertiary Admissions Ranking (ATAR). For students requiring an ATAR, please see the SACE page on our website for further information: lefevrehs.sa.edu.au/courseinformation/senior-school-sace-yr11-12/

REQUIREMENTS	
Year 10 Personal Learning Plan (Stage 1 compulsory subject and courses)	10
Year 11 (Stage 1) or year 12 (Stage 2) Literacy - from a range of English subjects and courses (Compulsory) Numeracy - from a range of mathematics subjects and courses (Compulsory)	20
Year 12 (Stage 2) Research Project - completed at Stage 1 (Compulsory) Other Stage 2 subjects and courses* (Compulsory)	10 60
Year 11 (Stage 1) or year 12 (Stage 2) Other Stage 2 subjects or courses of the students choice	90
Total	200

* Many students will complete subjects or courses worth more than 70 credits at Stage 2

CURRICULUM SUBJECT SELECTION PATHWAYS



- Subjects noted with (*) indicates that this subject is recommended learning at Stage 1 in preparation for Stage 2 option.
- Recommended learning for Mathematics, Science and Indonesian subjects at Stage 1 is full year.
- Orange highlighted Subject boxes require MANDATORY subject advice and recommendation for student choice. This advice is provided by the Learning Area team and can be subject to further consultation with the Subject Coordinator.
- EIF and Research Project are compulsory SACE subjects.